



Documentation

dbRadar 1.4

- [Features](#)
- [Connect](#)
- [Worksheets](#)
- [Databases](#)
- [Oracle Application](#)
- [Debug](#)
- [System load](#)
- [Database Objects](#)
- [F.A.Q](#)



What's new in dbRadar 1.4.0 :

- New look and feel
- inter threads - GUI synchronization
- Data model redesigned, many UI improvements
- Ftp support
- SqlLite, ODBC on Linux, no need for Oracle client
- Mac OS X support

See more on [features](#) ...

[Home](#)

Copyright © 2005
[theKompany](#)

dbRadar version
1.4.0



Features

- [Features](#)
- [Planned features](#)

dbRadar is a tool for the administration, monitoring and development of a variety of Databases. It is available for Linux, Windows and Mac OS X. dbRadar competes very favorably with products such as TOAD from Quest Software and NORAD from Bradmark, but at a fraction of the price.

dbRadar works with the following databases:

- Oracle
- PostgreSQL
- MySQL
- DB2
- ODBC
- SQLite

If the connection is successful the worksheet will open and the user can then use any DDL or DML that the target database supports. dbRadar uses the MDI approach for representing all of its child windows. This means that the user can open as many windows as he/she wants, close and navigate through them. From the File menu the user can Print, Save and Load any text files into the worksheet and execute them as sql scripts. The user can drop the actual connection with the database and start a new one from the File menu.

In the worksheet the user can cut, copy and paste any text using the appropriate key (CTRL-X, CTRL-C, CTRL-V) combination or by choosing the edit menu after the text has selected. The Database menu offers the user the ability to open a new worksheet or a new system load window. To switch from one window to another, use the Window menu. For Oracle and PostgreSQL connections the user has the ability to use code completion for selecting columns from the tables. The user can save the result set by right clicking the mouse over the grid and choosing a name for the file.

For Oracle connections only, the user can browse the objects from the database using the tree representation from the left and also can choose to see the execution path for a specific select statement by clicking the explain button from the worksheet toolbar.

Features

- **Worksheet** - Issue any DDL or DML that is supported by the target database. The result set is

presented in a grid from which it can also be saved. A status display will indicate the progress of the query.

- Threaded Queries - Queries run in their own thread so that the application remains responsive even during long executions. A special feature for Oracle databases is the ability to break any long running query.
- Multiple, simultaneous database connections. The user can switch from one connection to another.
- Powerfull editor with Syntax highlighting for : SQL, PL/SQL, PGSQL, MYSQL, DB2
- Code completion - Makes it quick and easy to select columns you want from your particular database. This feature is only available for Oracle and PostgreSQL currently.
- Oracle Applications - Only for Oracle Business Suite 11.0.3 and 11.5. You can monitor OA users and kill sessions. An upcoming version will allow you to view concurrent requests.
- Remote Info - Gather remote/local HP-UX, Sun OS, Linux load (system, user, idle) and processes.
- Database Objects - Users can visually browse and edit database objects (Oracle only).
- Save/Load any text files and execute them as SQL scripts, keep history files.
- Print any text in a worksheet.
- Tuning - The worksheet provides a tabbed page where the user can see the execution path for the current statement executed in a tree fashion (only for Oracle currently)
- Supports statements with placeholders in the worksheet. This way a user can insert something like a large object into the database.
- Ftp Support. Users can open, edit and transfer files via ftp.

Planned Features

- Users can visually browse and edit database objects for Postgres, Mysql and DB2.
- SSH support for retriving remote info.
- Support for Sql Server, Sybase, Sap, Interbase, Firebird
- Show online database performance indicators (buffer cache hits, library cache hits - for Oracle databases)
- By making use of our multiple database connections we will also be able to migrate data from one database to another.
- Windows remote load shown in graphically.

[Home](#)



Connect to Databases

When dbRadar starts the connect screen will appear:

Driver	Database	User	Mode	Host
--------	----------	------	------	------

Connection settings

Driver: ORACLE

Database Name: ORACLE
PostgreSQL
MySQL
DB2

Username:

Password:

Connection Mode: Normal

Hostname:

Port: Default

☒ Oracle Applications

☐ Unix Login

OK Cancel

Starting with version 1.4.0 Oracle client libraries are supplied with the application. To make a connection with an oracle databases you need to set ORACLE_HOME or TNS_ADMIN env variable so that the client can find the tnsnames.ora file. Only DB2 client libraries need to be installed to have access to the database. Choose the connection you want from the driver combo box and fill in the text boxes with the appropriate information. Ex for Oracle connections:

Driver	Database	User	Mode	Host

Remote Info

Username: oracle

Password: ***

Connection settings

Driver: ORACLE

Database Name: test

Username: scott

Password: *****

Connection Mode: Normal

Hostname: 192.10.10.10

Port: Default

☒ Oracle Applications

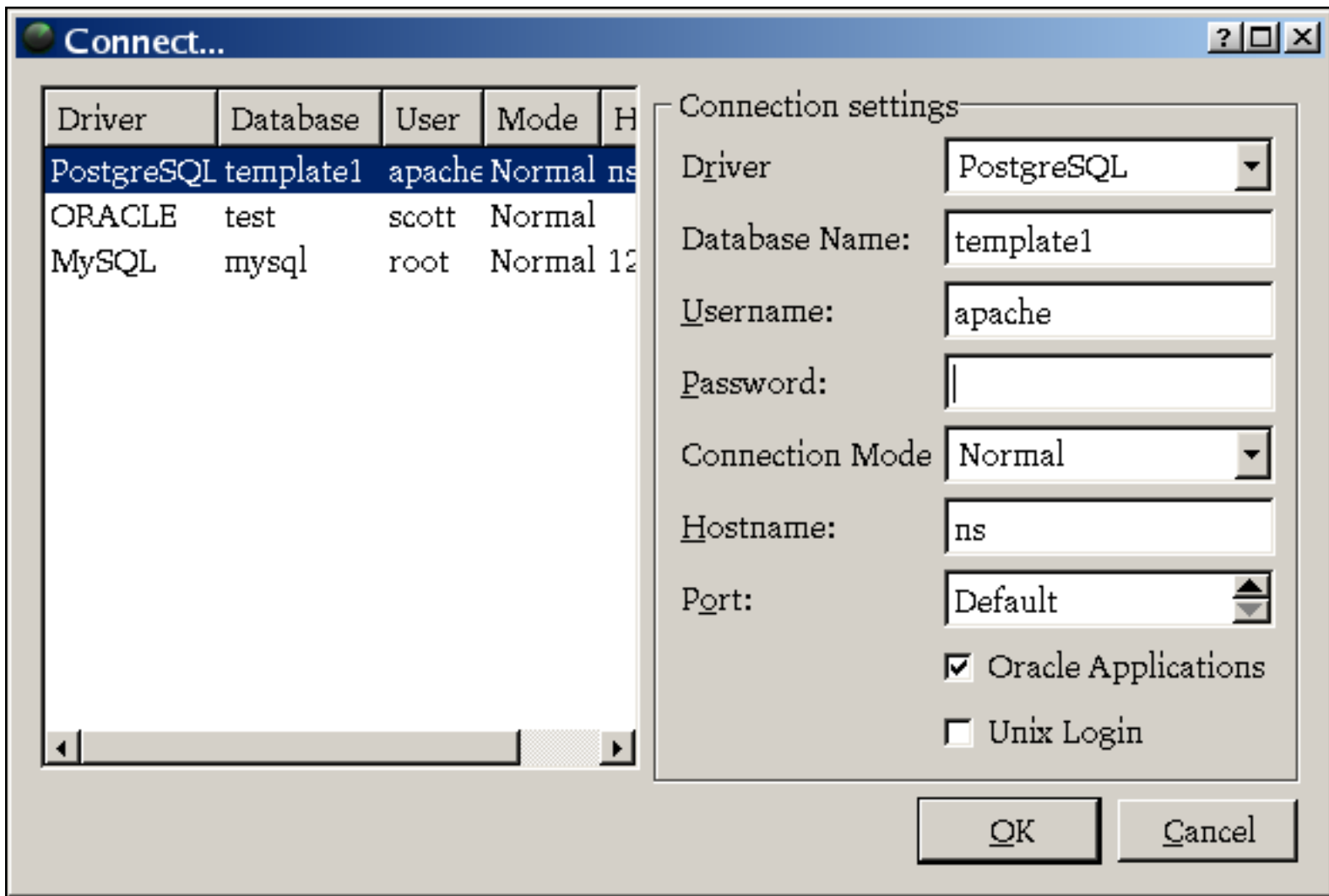
☒ Unix Login

OK Cancel

- Driver - the driver that creates the connection

- Database Name - the name of the database we want to connect(for Oracle - connect string)
- Username - the user who will make the connection
- Password - the password for the user
- Connection Mode - (only for Oracle) :Normal, Sys_Dba, Sys_Oper
- Hostname - the name or IP address of the database server we want to connect to. (Not needed for Oracle). Based on this address we can monitor the remote server
- Port - the port for the server database. Use this port if the database process is running on a different port than the default one.
- Oracle Applications - if the Oracle database is running Oracle Applications 11.0 or 11.5 the sysdba can monitor users and kill sessions. An upcoming version will allow you to view concurrent requests.
- Unix login - asks you for the username and password of a valid user that has shell access on the server. This way you can monitor the load of the server and all running processes. The remote server needs to be Linux, HP-UX or Sun OS and have rexecd (512 port) daemon process running so you can have access to those informations. The connections are logged so when you connect next time you don't have to fill in all the information for the connection. Just choose the

appropriate one from the list of connections:



If the connection is successful the worksheet is open and the user can use any DDL or DML that the target database supports. dbRadar uses the MDI approach for representing all of its child windows.

This means that the user can open as many windows as he wants, close and navigate through them. From the File menu the user can Print, Save and Load any text files into the worksheet and execute them as SQL scripts. The user can drop the actual connection with the database and start a new one from the File menu. In the worksheet the user can cut, copy and paste any text using the appropriate key (CTRL-X, CTRL-C, CTRL-V) combination or by choosing the edit menu after the text has selected. The Database menu offers the user the ability to open a new worksheet or a new system load window. To switch from one window to another use the Window menu.

[Home](#)

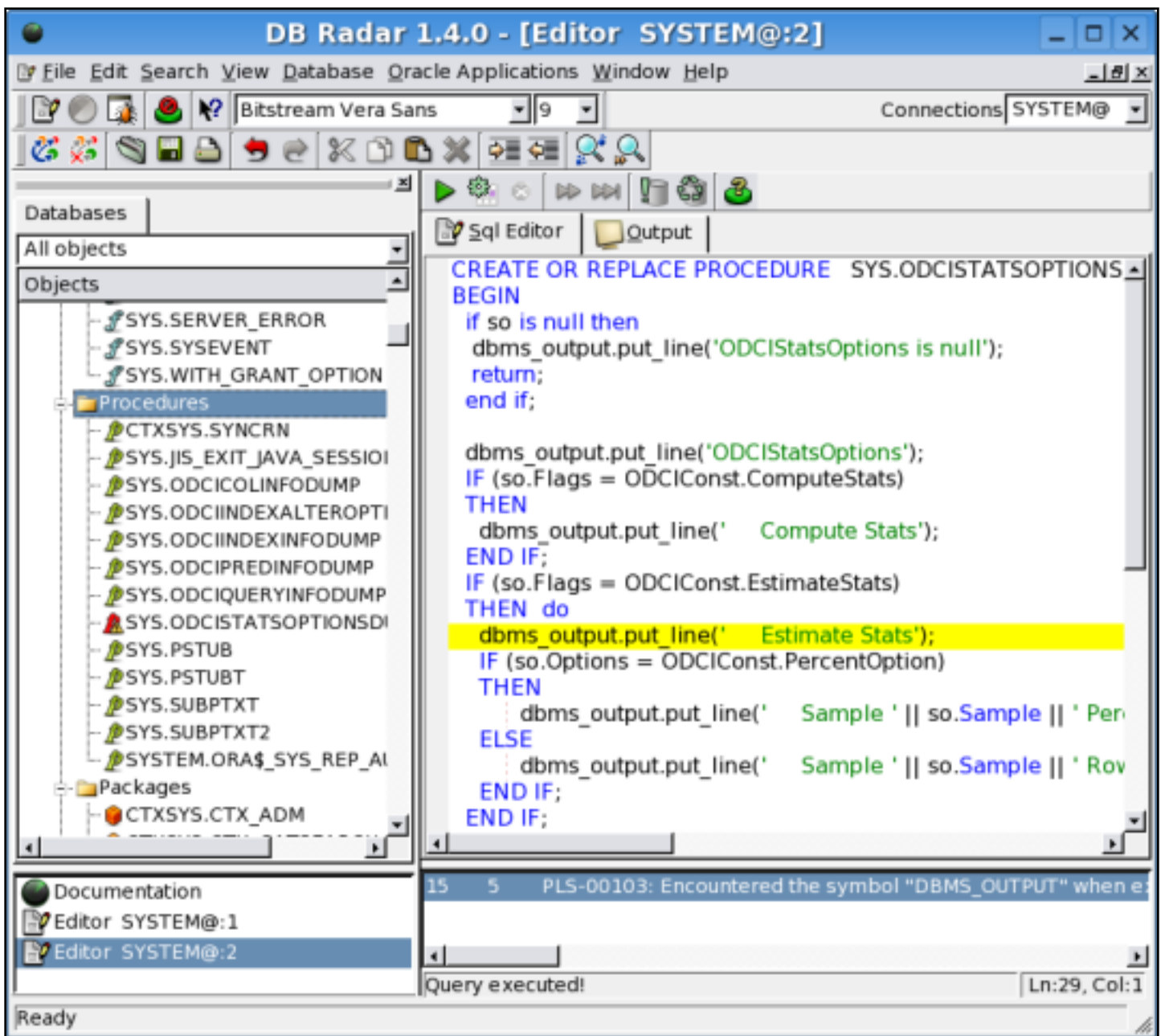


Worksheet

- [Syntax Highlight](#)
- [Code Completion](#)
- [Explain Plan](#)
- [Placeholders](#)
- [Ftp support](#)

Sintax Highlight

In the worksheet the user can Issue any DDL or DML that the target database supports. For Oracle PL/SQL code users can navigate through the lines which have errors. Having support for Syntax highlighting makes programming more intuitive.



Code Completion

For Oracle and PostgreSQL connections the user has the ability to use code completion for selecting columns from the tables. The user can save the result set by right clicking the mouse over the grid and choosing a name for the file.

DB Radar 1.4.0 - [Editor SYSTEM@:1]

File Edit Search View Database Oracle Applications Window Help

Bitstream Vera Sans 9 Connections SYSTEM@

Databases

All objects

Objects

SYSTEM@

- Tables
- Views
- Sequences
- Functions
- Procedures
- Packages
- Package bodies
- Types
- Type bodies
- Triggers
- Synonyms
- Java Sources
- Users
- Roles

Documentation

System SYSTEM@:2

Debugger SYSTEM@:3

Sql Editor

-- Code Completion

```
select * from all_tables t
where t.
```

Result

	OWNER	TABLE_NAME	TABLESPACE_NAME	CLUSTER_NAME	IOT_NAME	PCT_FREE	PCT_USED	INI_TRANS	MAX_TRANS	INITIAL_EXTENT
1	SYS									
2	SYS									
3	SYS									
4	SYS									
5	SYS	CDEF\$	SYSTEM							
6	SYS	PROXY\$	SYSTEM							
7	SYS	IND\$	SYSTEM							
8	SYS	FILE\$	SYSTEM							
9	SYS	UNDO\$	SYSTEM							
10	SYS	TAB\$	SYSTEM							
11	SYS	FET\$	SYSTEM							
12	SYS	COL\$	SYSTEM							
13	SYS	SEG\$	SYSTEM							
14	SYS	CLU\$	SYSTEM							
15	SYS	CON\$	SYSTEM							
16	SYS	TS\$	SYSTEM							

16 rows retrived in 0.101 s

Ln:5, Col:12

Ready.

Explain Plan

For Oracle connections only, the user can browse the objects from the database using the tree representation from the left and can also choose to see the execution path for a specific select statement by clicking the explain button from the worksheet toolbar.

DB Radar 1.1 - [Editor SYS@mar1]

File Edit View Database Worksheet Oracle Applications Window Help

Current connection: SYS@mar1

SQL Editor

```
select * from all_tables t where t.TABLE_NAME like '%ALL%'
```

Result Explain Plan

Id	Operation	Options	Object name	Object
0	SELECT STATEMENT			
1	FILTER			
2	NESTED LOOPS			
3	NESTED LOOPS			
4	NESTED LOOPS	OUTER		
5	NESTED LOOPS	OUTER		
6	NESTED LOOPS	OUTER		
7	NESTED LOOPS	OUTER		
8	NESTED LOOPS			
9	TABLE ACCESS	FULL	OBJ\$	
10	TABLE ACCESS	CLUSTER	TAB\$	
11	INDEX	UNIQUE SCAN	I_OBJ#	NON-U
12	TABLE ACCESS	BY INDEX ROWID	OBJ\$	
13	INDEX	UNIQUE SCAN	I_OBJ1	UNIQUE
14	TABLE ACCESS	BY INDEX ROWID	OBJ\$	
15	INDEX	UNIQUE SCAN	I_OBJ1	UNIQUE
16	TABLE ACCESS	CLUSTER	USER\$	
17	INDEX	UNIQUE SCAN	I_USER#	NON-U
18	TABLE ACCESS	CLUSTER	SEG\$	

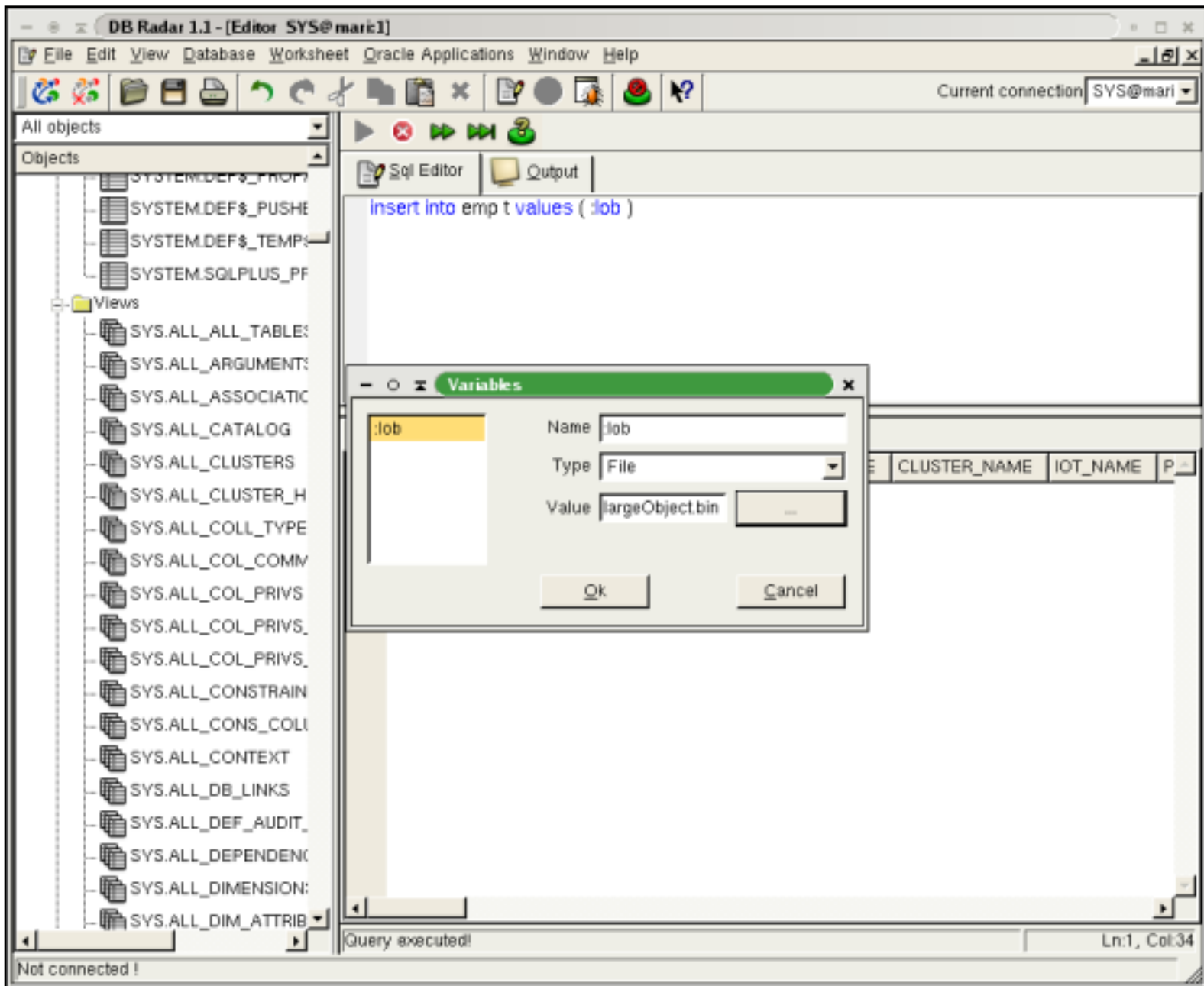
3 rows retrieved in 0.122 s

Ln:1, Col:59

Not connected !

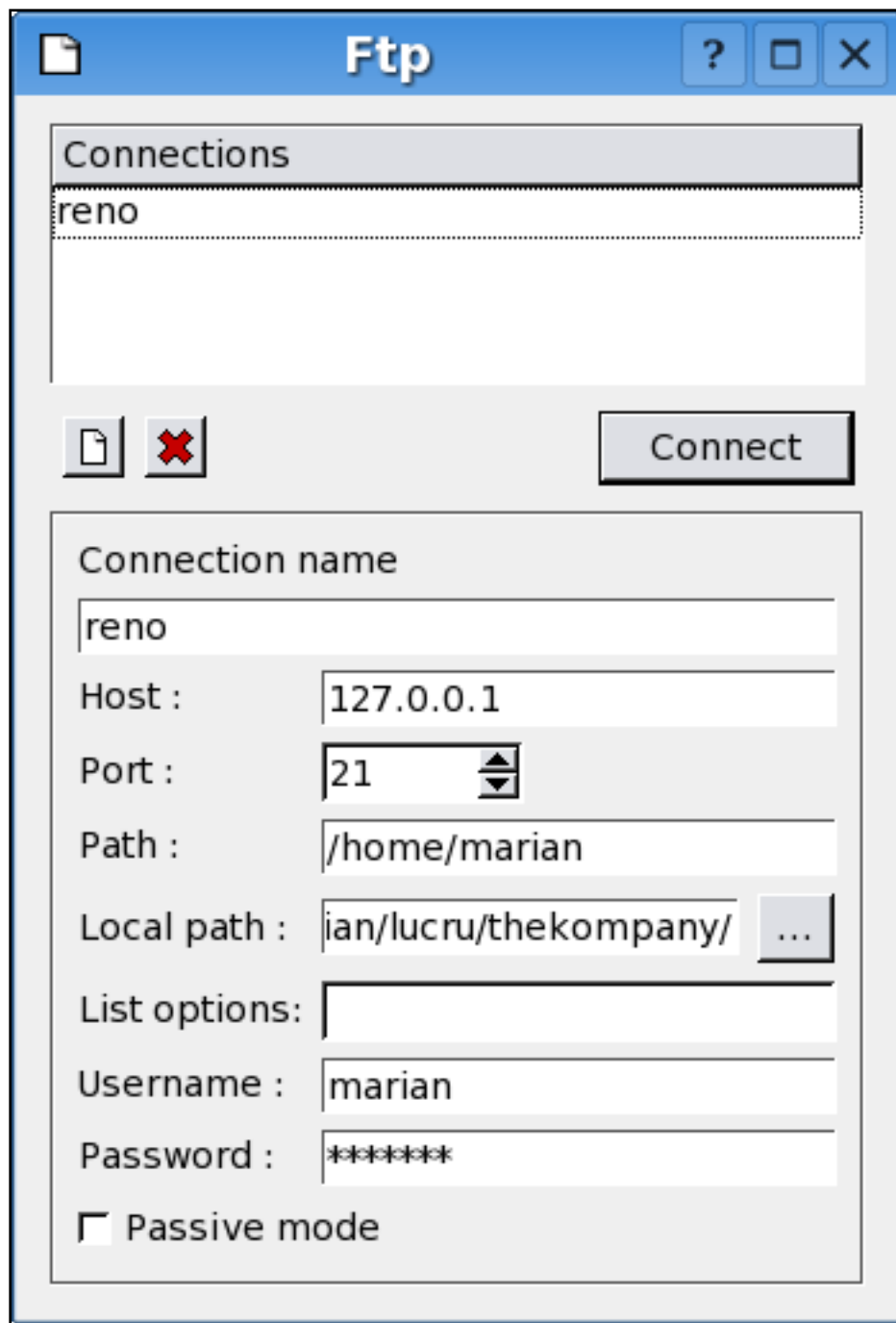
Placeholders

Supports statements with placeholders in the worksheet. This way a user can insert something like a large object into the database.



Ftp Support

Files can be opened, saved, transfered via ftp support now. Fill the appropriate values to establish a remote/local ftp connection:



Then you can start using the remote/local ftp dialog:

DB Radar 1.4.0 - [Editor SYSTEM@:4]

File Edit Search View Database Oracle Applications Window Help

Bitstream Vera Sans 9 Connections SYSTEM@

Databases | Ftp Browser

Name Size

- ..
- 4.0.0-b1
- Desktop
- InstallShieldX
- Mail
- Projects
- Qt
- crosstool
- dbRadar

Remote Compare

Local Disconnect

Name

- ..
- CodeByDesign
- CodeByDesign-3.0.0
- dbRadar-1.3
- dbRadar-1.3.0-040331
- dbRadar-1.4
- dbRadar-1.4-041029
- dbRadar-1.4-041124
- dbRadar-icons

System SYSTEM@:1
Debugger SYSTEM@:2
Documentation SYSTEM@:3
Editor SYSTEM@:4

Sql Editor Output

```
select * from all_views
```

Result Explain Plan

	TEXT_LENGTH	TEXT	TYPE_TEXT_LENGTH	TYPE_TEXT	OID_T
1	1359	[TEXT] ...	0		0
2	2102	[TEXT] ...	0		0
3	3142	[TEXT] ...	0		0
4	1386	[TEXT] ...	0		0
5	1629	[TEXT] ...	0		0
6	497	[TEXT] ...	0		0
7	1770	[TEXT] ...	0		0
8	797	[TEXT] ...	0		0
9	628	[TEXT] ...	0		0
10	542	[TEXT] ...	0		0
11	541	[TEXT] ...	0		0
12	1547	[TEXT] ...	0		0
13	1028	[TEXT] ...	0		0
14	244	[TEXT] ...	0		0
15	155	[TEXT] ...	0		0
16	---	---	---		---

16 rows retrived in 0.118 s Ln:5, Col:1

Ready.

[Home](#)



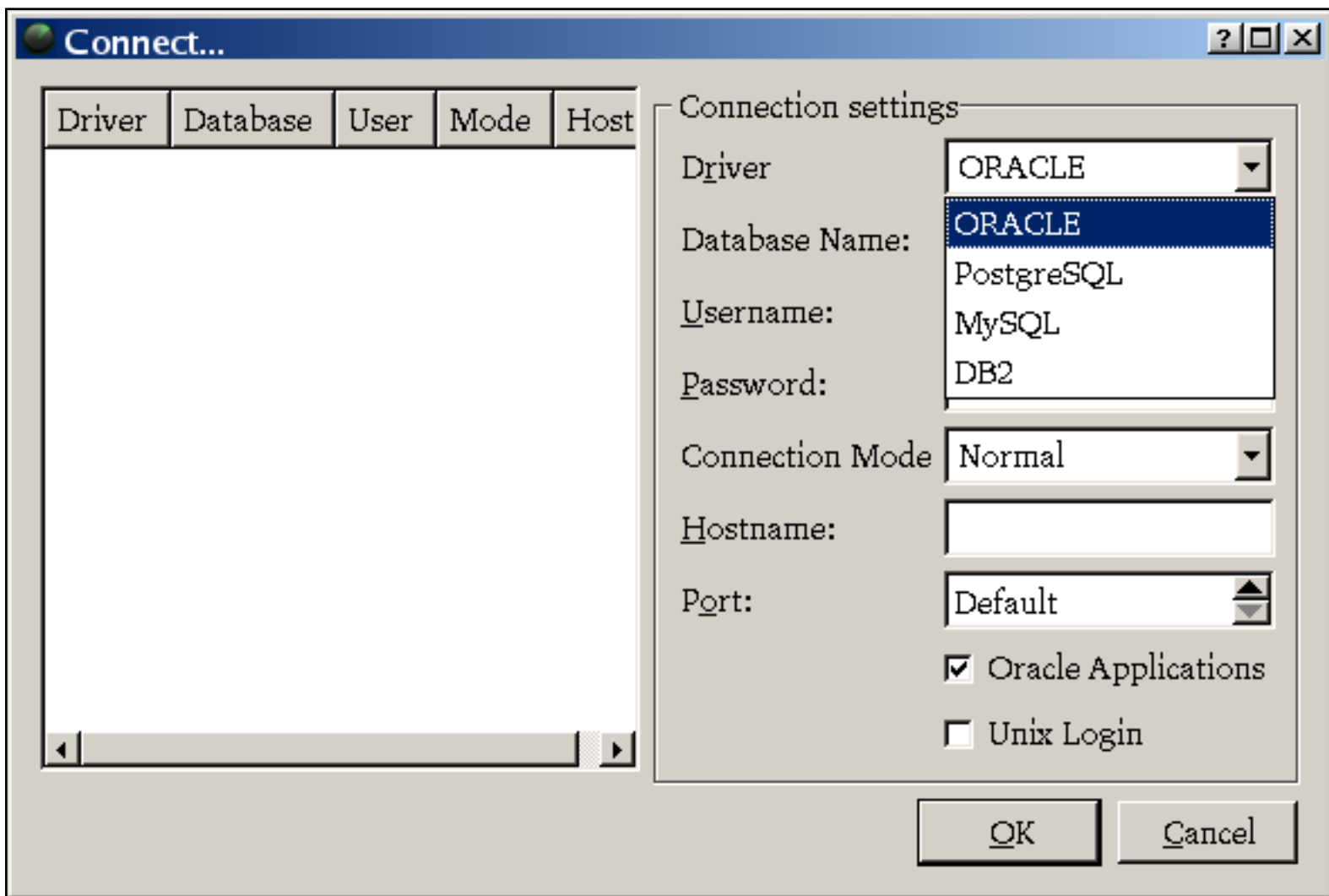
Databases

dbRadar works with the following databases:

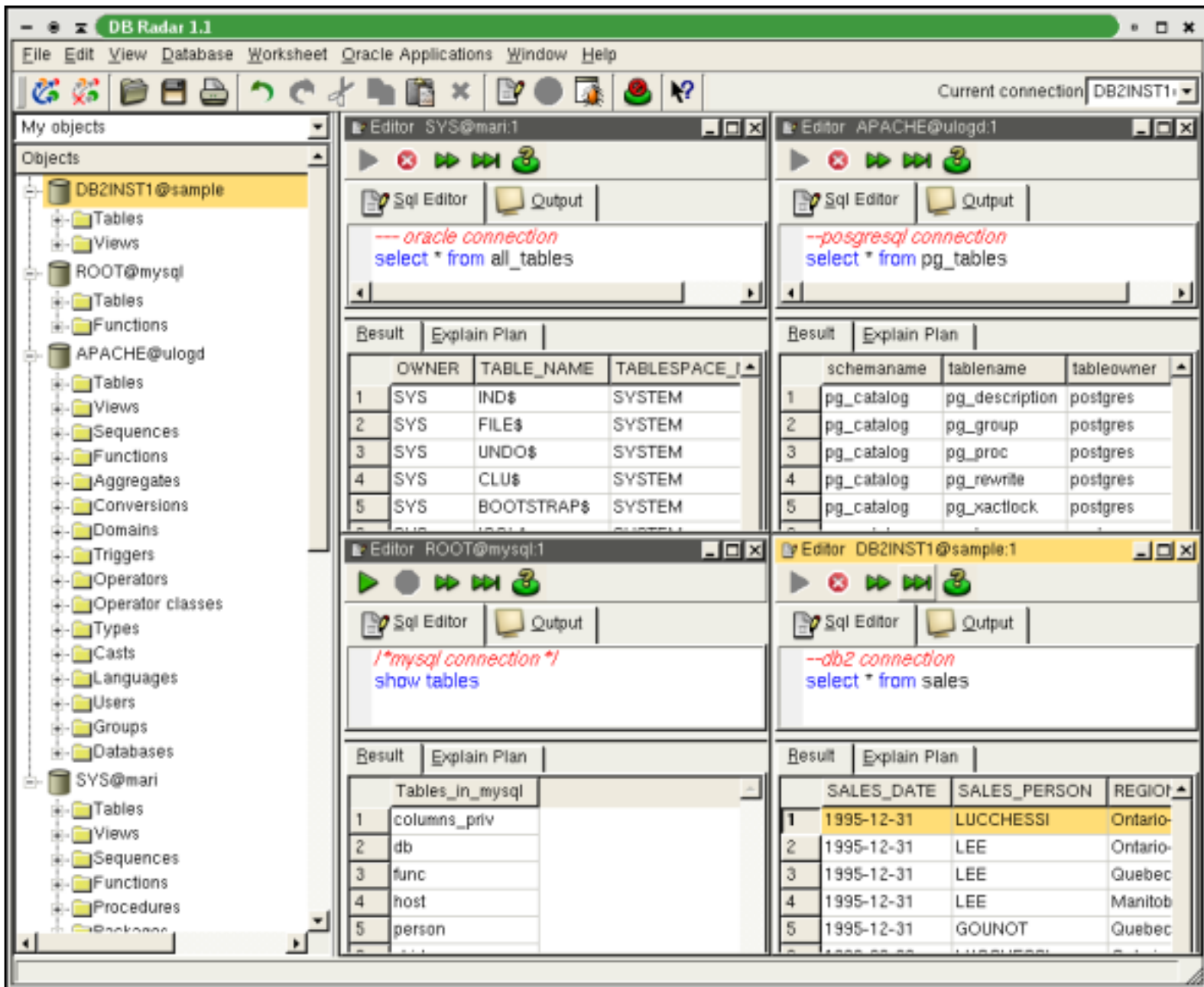
- [Oracle](#)
- [PostgreSql](#)
- [MySql](#)
- [DB2](#)

Choose the connection you want from the driver combo box and fill in the text boxes with the appropriate information. Ex for Oracle connections:

Connections



There is support for multiple simultaneous database connections. Users can run multiple queries against any of the above queries without causing the user interface to hang.



[Home](#)



Oracle Applications

- [Oracle Applications](#)

System administrators and DBA for Oracle Applications 11.0. and 11.5 can monitor user activity and kill sessions more elegantly than ever before by choosing from the Oracle Applications menu the kill session window.

Oracle Applications

The screenshot shows the DB Radar 1.1 interface. The title bar is "DB Radar 1.1 - [Kill session for Oracle Applications SYSTEM@prod:3]". The menu bar includes File, Edit, View, Database, Worksheet, Oracle Applications, Window, and Help. The toolbar contains various icons for file operations and database management. The left pane shows a tree view of database objects, including SYSIBM .SYSX, SYSIBM .TABLE, SYSIBM .UDT, SYSIBM .USER, SYSIBM .VIEWS, SYSSTAT .COL, SYSSTAT .COL, SYSSTAT .COL, SYSSTAT .COL, SYSSTAT .FUNC, SYSSTAT .INDE, SYSSTAT .ROU, and SYSSTAT .TABL. The main pane displays the "Kill session for Oracle Application" dialog box. The dialog box has a title bar "Kill session for Oracle Application" and a message: "System administrators and DBA for Oracle Applications Business Suite 11.0. and 11.5 can monitor user activity and kill sessions". It contains fields for Data (02/02/2004), Time (0), and IP (192.168.32.114). Below these fields is a table with columns USER_NAME and PID, showing a single row with USER_NAME 1 and PID 176. To the right of the dialog box is a table with columns SID, SERIAL#, and US_. It shows three rows: (148, 1832, API), (246, 209, API), and (254, 146, API). Below the dialog box is a table titled "Current open sessions on Oracle Applications" with columns Form, Login name, Time, and Pid. It shows 15 rows of session data. The "Refresh" button is located to the right of the table.

SID	SERIAL#	US_
148	1832	API
246	209	API
254	146	API

Form	Login name	Time	Pid
1 Invoice Workbench	appaprod	2:43	126
2 Run Reports	appaprod	0:02	129
3 F4 Payroll and Assignment Processes	appaprod	0:00	120
4 Payment Workbench	appaprod	0:38	110
5 NULL	appatest	11089:02	169
6 Receipts	appaprod	0:19	176
7 Run Reports	appaprod	4:33	138
8 Invoice Workbench	appaprod	0:34	36
9 Combined Person & Assignment Form	appaprod	4:20	131
10 NULL	appaprod	4197:02	12
11 Combined Person & Assignment Form	appaprod	1:20	148
12 Run Reports	appaprod	0:23	115
13 Enter Requisitions GUI	appaprod	6:05	152
14 NULL	appaprod	7659:58	142
15 Enter Requisitions GUI	appaprod	0:06	172



[Home](#)

Copyright © 2005 [theKompany](#)

dbRadar version 1.4.0



Debug

- [Debug](#)

Users can debug any Oracle statements and step in, out, and over the code.

Debug

The screenshot displays the DB Radar 1.1 - [Debugger SCOTT@prod:1] application. The interface includes a menu bar (File, Edit, View, Database, Debugger, Oracle Applications, Window, Help), a toolbar, and a status bar showing 'Ready.' and 'Ln:9, Col:1'.

My objects (Left Panel):

- SCOTT.SMP_VAB_SA
- SCOTT.SMP_VAR_LIS
- Sequences
 - SCOTT.BLOBID
 - SCOTT.EVT_NOTIFY_
 - SCOTT.EVT_OPERAT
 - SCOTT.EVT_PROFILE
 - SCOTT.SMACTUALPF
 - SCOTT.SMAGENTJOE
 - SCOTT.SMARCHIVES
 - SCOTT.SMCONSOLE:
 - SCOTT.SMDATABASE
 - SCOTT.SMDBAUTHSE
 - SCOTT.SMDEFAULTS
 - SCOTT.SMDISTRIBUTI
 - SCOTT.SMFOLDERSE
 - SCOTT.SMFORMALP.
 - SCOTT.SMGLOBALC
 - SCOTT.SMHOSTAUTH
 - SCOTT.SMHOSTSEGI
 - SCOTT.SMINSTALLA1
 - SCOTT.SMLOGMESS.
 - SCOTT.SMMONTHLY

Sql Editor (Center Panel):

```
--debugging PL/SQL code
declare
  i number := 100;
  n number;
begin
  select count(*) into n from all_tables;
  i := add_two(i);
  if i < n then
    i := n + i;
  end if;
end;
```

Watches (Bottom Right Panel):

	Variable	Value	Exception
1	i	102	SUCCESS
2	n	161	SUCCESS

[Home](#)

Copyright © 2005 [theKompany](#)

dbRadar version 1.4.0

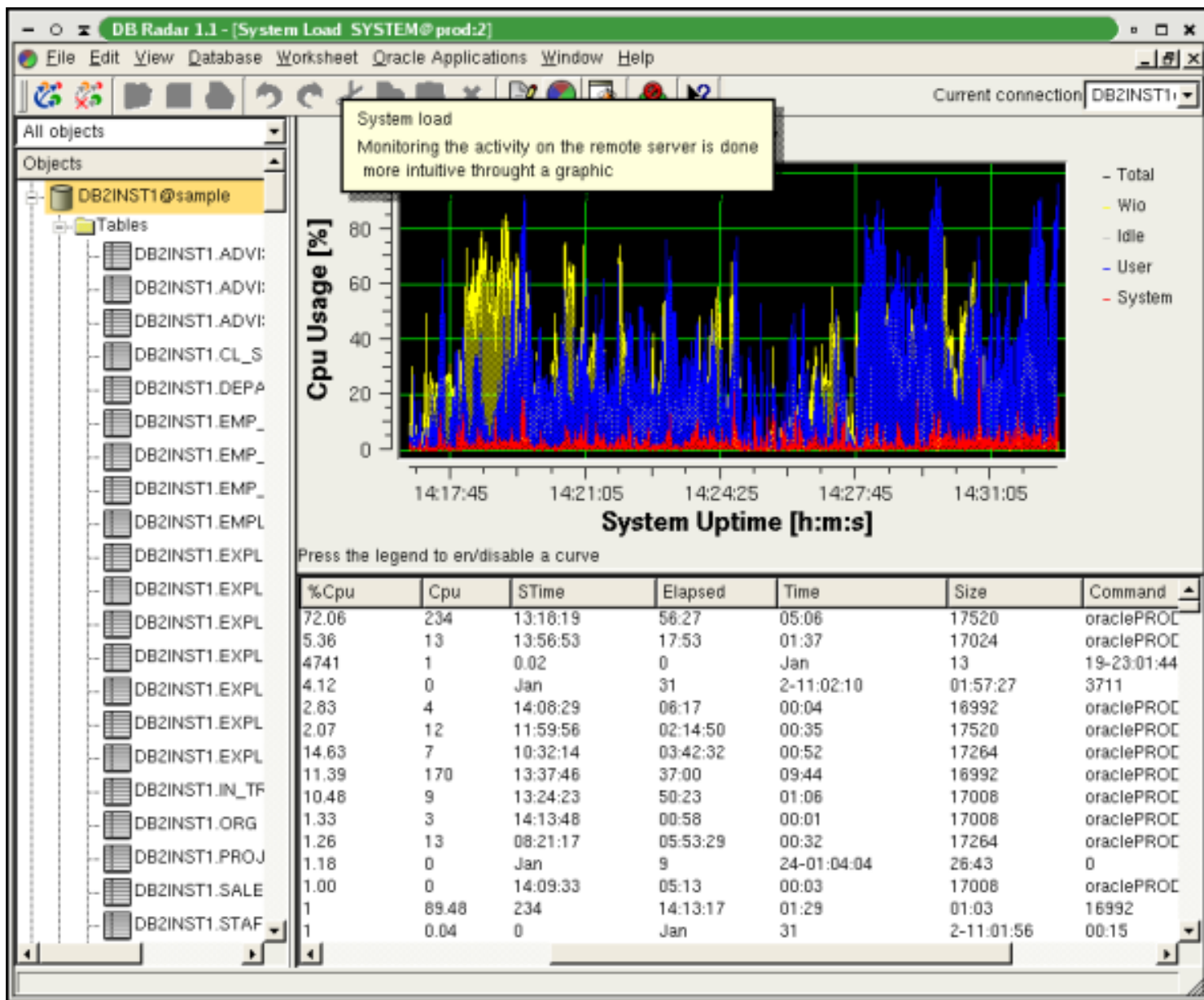


System load

From the Database menu the user can open a window with the system load from the server. This way monitoring the activity on the remote server is done more easily. The remote processes are also shown and by clicking on the lists header the user can sort those processes on every aspect of them. For example by clicking on %CPU we can see which process is consuming the most CPU.

The following information is provided:

- wait for input output
- idle
- user load
- system load



[Home](#)



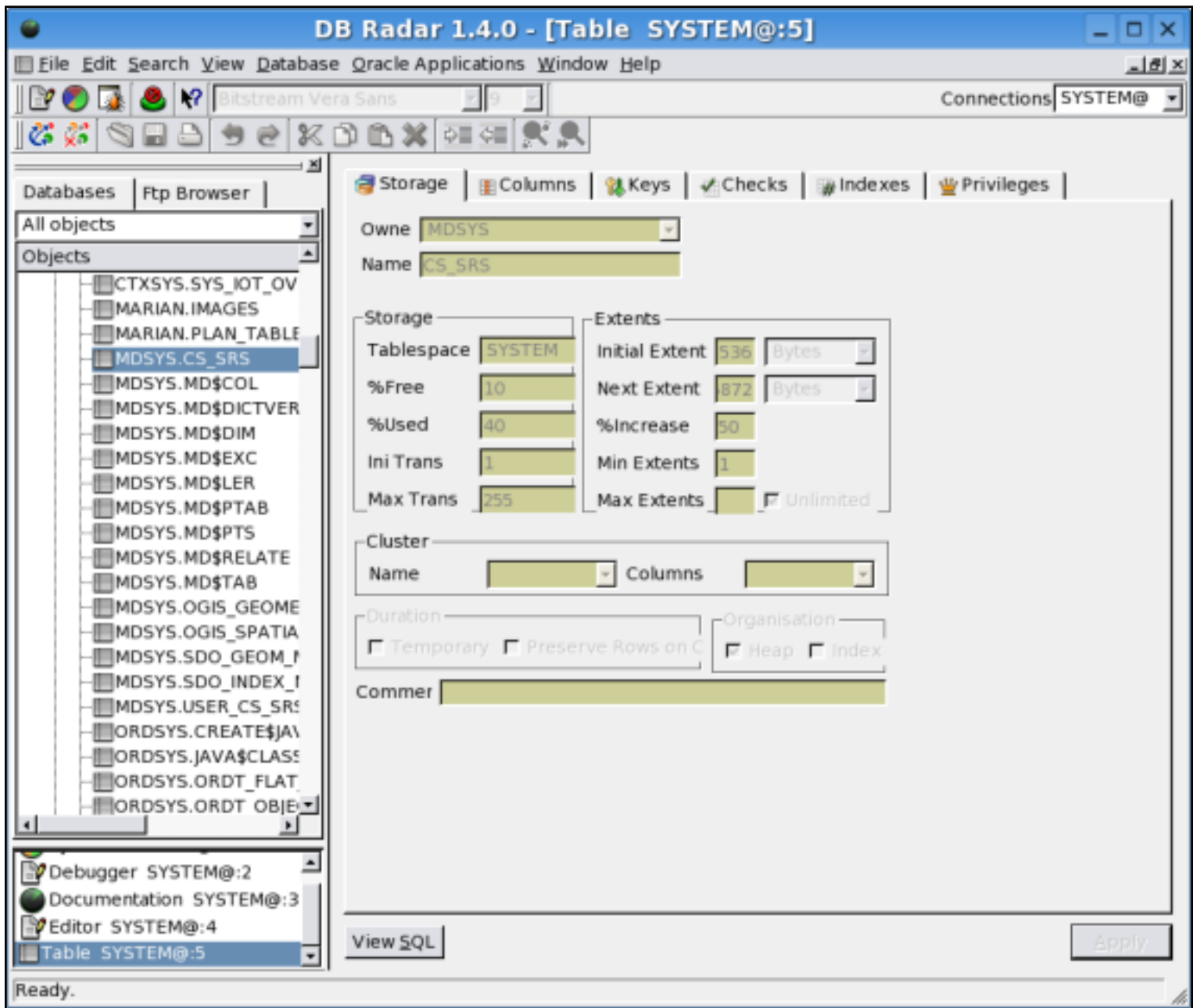
Database Objects

dbRadar supports the following operations on database objects: create, edit, browse, drop, compile : (Currently only for Oracle)

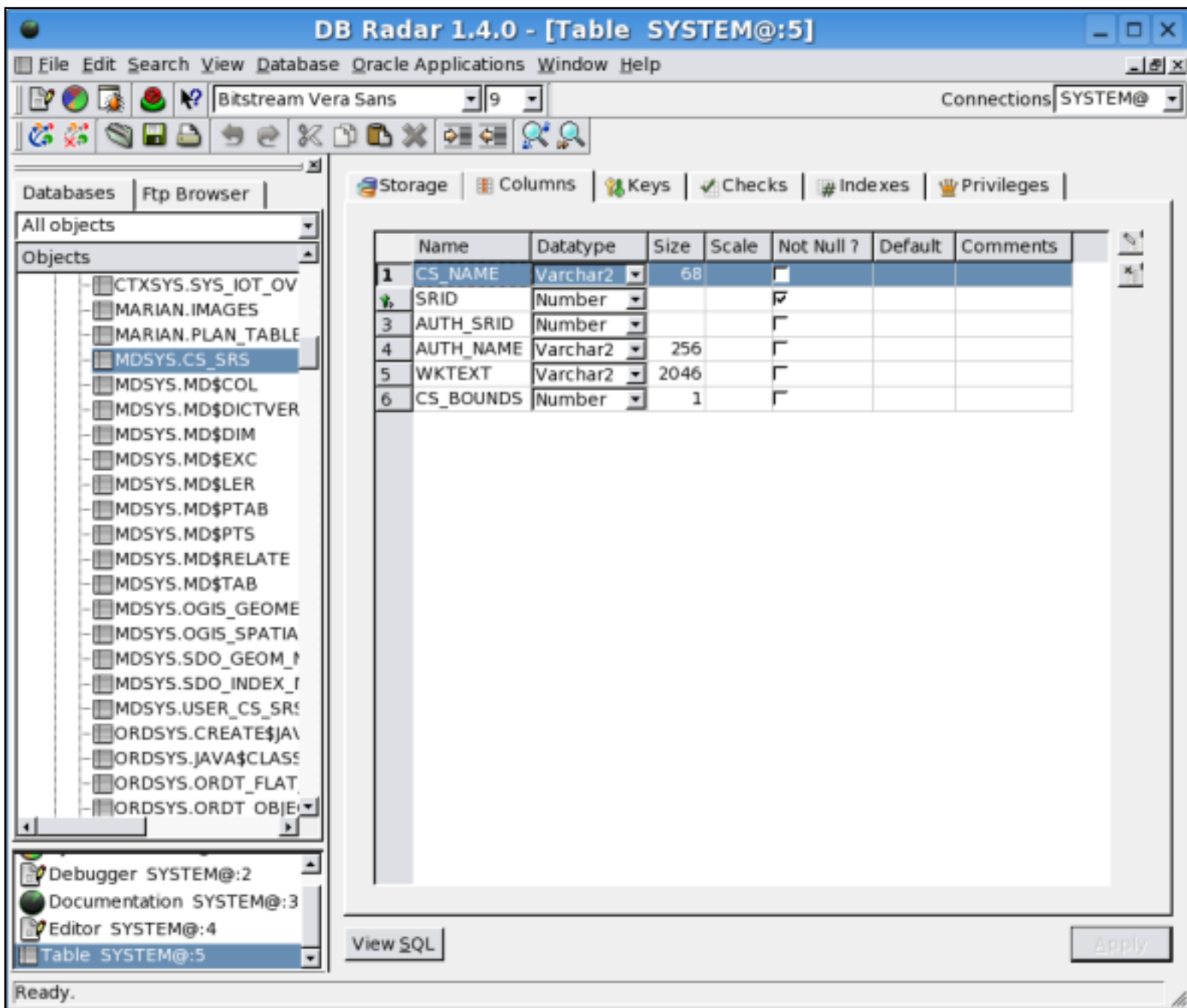
- [New](#)
- [Edit](#)
- [Browse](#)
- [Drop](#)
- [Compile](#)

Users can create, edit, drop, browse and compile tables, views, sequences, functions, procedures, packages, triggers and types.

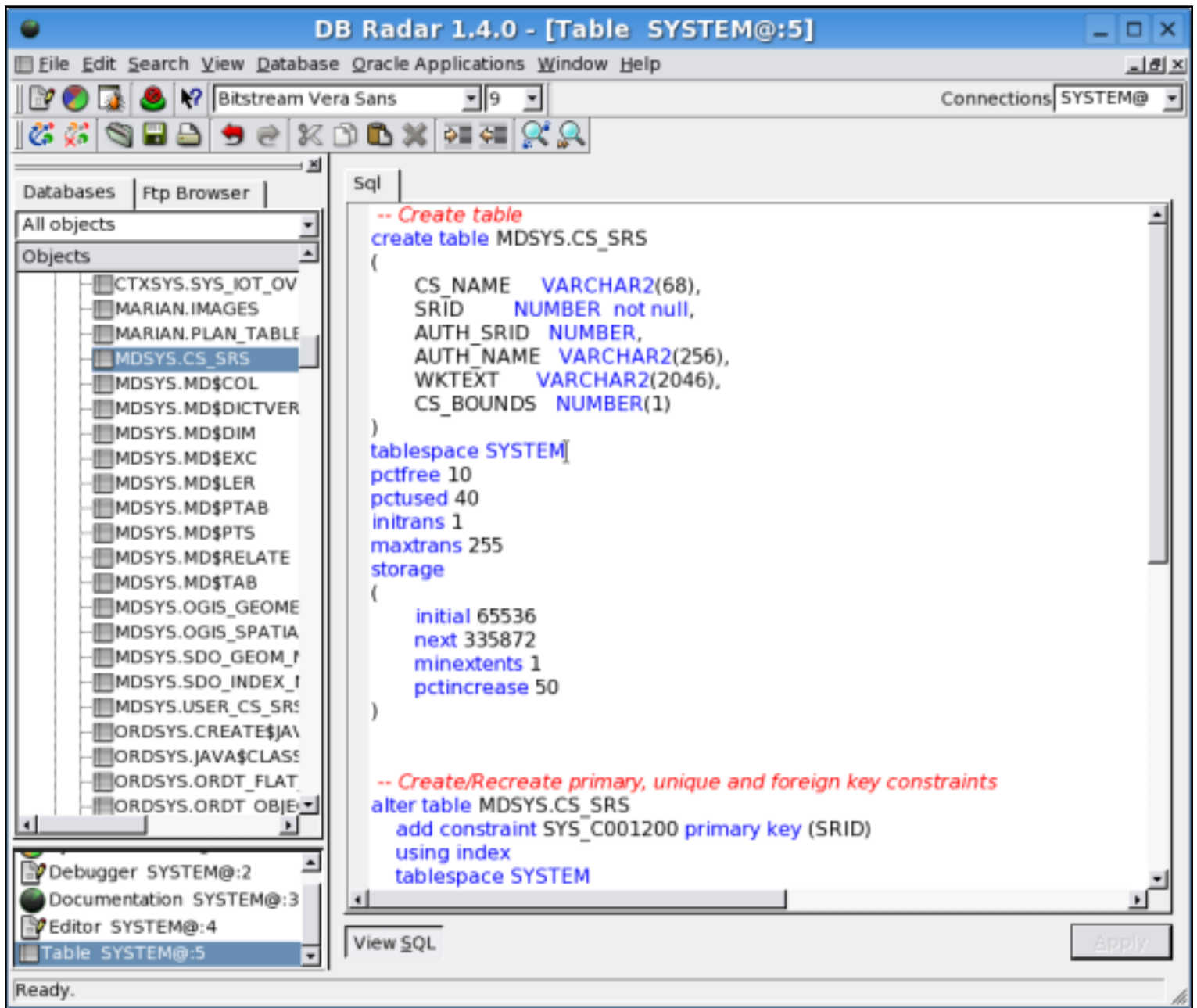
Objects



All the information available for a table is retrieved from the database: storage, columns, keys, indexes, checks, privileges.



You can easily see all the DDL for every database object.



[Home](#)



F.A.Q

- [Oracle Connection doesn't work:](#)

Oracle Connections doesn't work:

Starting with version 1.4, dbRadar uses the Oracle instant client. Therefore there is no need to have the Oracle client libraries installed as a prerequisite for making a connection.

All you have to do is set the ORACLE_HOME or TNS_ADMIN environment variables so that dbRadar can find the tnsnames.ora file.

```
export TNS_NAME=_path_to_your_tnsnames_file
```

Use the following tnsnames.ora file to make your settings: MARI.WORLD = (DESCRIPTION = (ADDRESS_LIST = (ADDRESS = (PROTOCOL = TCP)(HOST = server)(PORT = 1521)))) (CONNECT_DATA = (SID = mari)))

[Home](#)